

# RETAIL wash and maintenance



**GTI MAX – Attraction – Creation 70 – Design Tile – Urban Tile  
LVT – Taralay impression – Creation Zen – Linoleum - Mipolam**



## **Floor Washing Machine**

Red 3M pad or medium hard brush.

Daily cleaning with a neutral floor cleaner \*

### **Important!**

Correct mixing ratio of water/cleaner, in cold/lukewarm water

Set the floor cleaning machine to high water dosage

Max speed for the floor cleaning machine is 3.5 km/h (slow walking)

Change pads/brushes according to instructions. Pad after 20,000 m<sup>2</sup> = approx. after 4 weeks. Brushes when there are visible signs of wear.

Check suction/wiper blade so the floor is almost dry after the machine

For heavy soiling, soak the floors in floor deep cleaner for at least 10 minutes. Adjust the size of the work area so the floor does not dry out. Then wash the floor as you would for daily cleaning.

**It is important to empty and clean the floor washing machine after use.**



## **Manual Cleaning**

Coarse Microfiber Mop.

Use red 3M doodlebug for the edges the machine cannot reach.

Daily cleaning with a neutral floor cleaner \*

### **Important!**

Correct mixing ratio of water/cleaner, in cold/lukewarm water

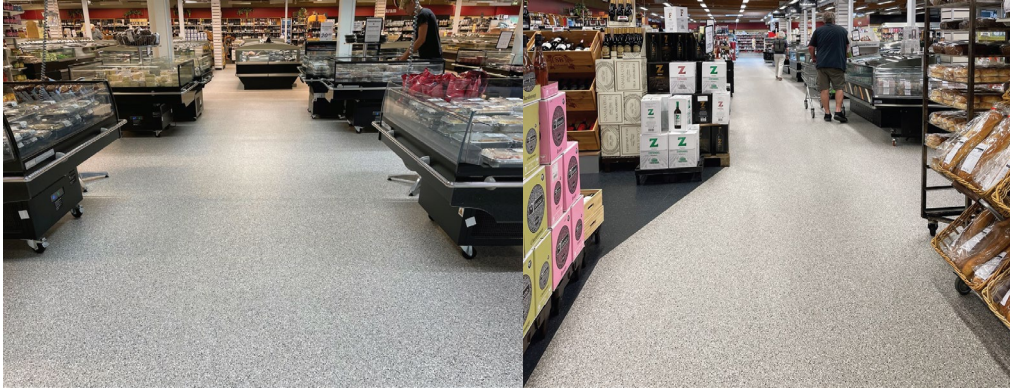
Leave the floor "almost" dry

For heavy soiling, soak the floors in floor deep cleaner for at least 10 minutes. Adjust the size of the work area so the floor does not dry out. Then wash the floor as you would for daily cleaning.

**Change the microfiber mop when it is dirty (app. 10 m2)**

\* »See the list of manufacturer-recommended cleaning products«

# DETALJHANDEL vask og vedlikehold



**GTI MAX – Attraction – Creation 70 – Design Tile – Urban Tile  
LVT – Taralay impression – Creation Zen – Linoleum - Mipolam**



## **Gulvvaskemaskin**

Rød 3M pad eller medium hard børste.  
Daglig vask med et nøytralt gulvvaskemiddel \*

### **Viktig!**

Korrekt blandingsforhold vann/vaskemiddel, i kaldt/lunkent vann  
Still inn gulvvaskemaskinen til høy vanddosering  
Maks. hastighet for gulvvaskemaskinen 3,5 km/t (sakte gange)  
Bytt pad/børster etter forskrifter. Pad etter 20.000 m<sup>2</sup> = ca. hver 4. uke  
Sjekk sug/vaskelabb slik at gulvet er nesten tørt etter vaskemaskinen

For kraftig tilsmussing, la gulvene ligge i gulvrens i minst 10 minutter. Juster størrelsen på arbeidsområdet slik at gulvet ikke tørker ut. Vask deretter gulvet som du ville gjort ved daglig rengjøring.

**Det er viktig å tømme og rengjøre gulvvaskemaskinen etter bruk.**



## **Manuell vask**

Grov mikrofiber mopp  
Bruk rød 3M doodlebug til kantene vaskemaskinen ikke kan nå  
Daglig vask med et nøytralt gulvvaskemiddel \*

### **Viktig!**

Korrekt blandingsforhold vann/vaskemiddel, i kaldt/lunkent vann  
Etterlat gulvet "nesten" tørt

For kraftig tilsmussing, la gulvene ligge i gulvrens i minst 10 minutter. Juster størrelsen på arbeidsområdet slik at gulvet ikke tørker ut. Vask deretter gulvet som du ville gjort ved daglig rengjøring.

**Bytt mikrofibermoppen når den er skitten (ca. 10 m<sup>2</sup>).**

\* »Se listen med produsent anbefalte rengjøringsprodukter«